

Shear
DOODLE

For The Love of The Dog ❤️



Setting a new standard of care and shaking up the grooming industry!

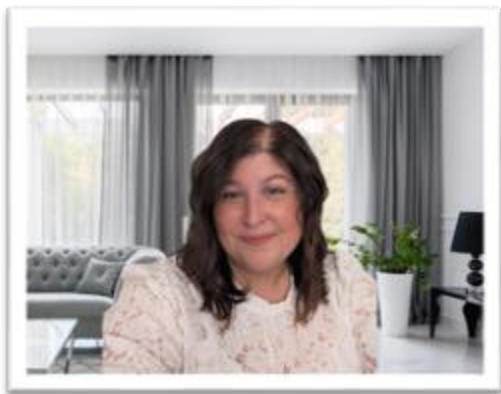
About us & why we care

Hi, I am Hollie, I have been grooming professionally for 12 years and opened Shear Doodle July 2024. I am shamelessly extra when it comes to my own pets, and I am thrilled to extend that passion into a luxury mobile experience. I have always prioritized quality over quantity. When I started Shear Doodle, it was clear that it had to be an exclusive, boutique-style grooming experience for each pet.

I am passionate about the care our beloved animals receive, and I wanted to incorporate my love for natural and holistic practices, which is why Shear Doodle hand selects each product we use. Chemicals are heavily prevalent in the grooming industry, and I have sought out companies that provide high quality products, made naturally.

I know that I want my dogs to live their longest, fullest lives and if the products I purchase and use can help that happen, then I will make it happen, not just for my dogs, but every single pet I groom. I want to shake things up in the grooming industry and start a healthy pet revolution!

Thank you for trusting Shear Doodle with your pets. We know your pets mean the world to you and your family and we are grateful for the opportunity to care for them.



“For The Love of The Dog ❤️” Hollie Grieser, Founder

Welcome to the Maintenance Membership Program

- Custom, all-inclusive grooming experience at \$120/ per hour
- Maintenance bath and tidy between grooming \$100/ per hour (Only for haircut Maintenance dogs- Not double coated breeds).
- Exclusive use of Doglyness Products- tailored to your pet- Chemical Free, Cruelty Free, Plastic Free
- Priority scheduling over non- members, with a guaranteed recurring spot on the schedule for the year.
- Hot Towel Treatment- We use a towel warmer to provide warmth, comfort and relief for achy joints, post tub time.
- Fun, Seasonal bandanas- personalized bandanas for the Holidays
- Birthday month treats from T&G Barkuterie. Birthday mentions are also on Instagram @bewitching_grooms_by_hollie, Sheardoodlemobile.com and our monthly newsletter.

Maintenance Membership is \$6.99/ Monthly

Prepay your membership for the year and receive 2 months free
\$69.99 Annual

Why We Care About the Products

To put it simply, "For The Love of The Dog ❤️"

Shear doodle is about providing the best care for your pet and that means the best products. What are the best products? Shear Doodle takes a natural approach by using high quality products that are safe, even for the people. Products made with real, natural ingredients that are safe for the environment, vegan, organic, and most importantly cruelty-free. It is safe to say, we all want our dogs to live as long as possible, using chemical free products helps to alleviate the risk of allergies, hormone imbalance and cancer. Shear Doodle will never use products such as dish soap or detergent on your pet!

Once we switch your pet over to natural products, you will notice skin issues disappear, matting is almost non-existent, less shedding, and that the coat stays cleaner in between grooming. It is a win all around.



Products We Use:

Shear Doodle proudly uses Doglyness Premium Pet Products Exclusively for our members. Doglyness is a 100% chemical free-botanical based product line. Please visit them at www.doglyness.com to read more about their philosophy and No Nasties Pledge!

Kin & Kind Ear Cleaner; No chemicals, certified organic and you can find transparent ingredient lists for all their products.

CBD Dog Health Paw Moisturizer; Made with full spectrum hemp extract (CBD) and completely natural. We use both the soothe and Nourish salves for paw pads, elbow pads and snouts.

Dr. Judy Morgan Dental Drops; Made with Velvet from Deer antlers. I cannot say enough about how wonderful this product is. We mix this product with coconut oil for natural toothpaste.

LUCAA+ Pet Probiotic Dental Care Spray; Helps to Optimize microbial balance and reduce gum inflammation

Why we require a maintenance schedule for membership:

Typically, dog's coats can grow anywhere from 1/4- 1/2" plus per month. Most clients are not able to brush their dogs regularly enough to maintain the length they desire. To avoid overgrowth and matting, a schedule is required. All pets are required to stick to an 8 week (about 2 months) or less grooming schedule and a 2-4-week schedule might be recommended based on your pets coat type and length. When pets are groomed on a maintenance schedule it can prevent matting, help with skin issues and makes the time they spend on the grooming table less, since they are maintained. Overall, a shorter grooming time and better experience because grooming should be a normal and enjoyable experience for all dogs! If your pet has fur and does not require a full body haircut, we still require an 8 week or less grooming schedule to maintain proper hygiene, skin and coat health.

Thank You



Find us online



@bewitching_grooms_by_hollie

www.sheardoodlemobile.com